



Formed in August 1967 by Bob Wheeler, the Crittenden County Historical Society, Inc. is a nonprofit organization. The Historical Museum, now located in the oldest church in Marion, built in 1881, opened its doors to the public in April 2004. Operated and staffed by the Historical Society,

our aim is to collect and preserve our Crittenden County history and heritage.

*On display are vintage clothing and accessories, military uniforms from service related articles from different wars, a great collection of school pictures and memorabilia, and many other items pertaining to our history.*

The Croft Cabin was originally located outside of Tolu, KY.

Mr. Tom Smith Croft, who came to what is now Crittenden County, from South Carolina, bought the Thomas Henry Wallace farm in the early 1800's. The original log cabin was 20 feet by 20 feet, with a stone fireplace and chimney. It was used as a slave cabin and in later years two rooms were added and it was covered with weatherboarding. The weatherboarding helped protect the logs, most of them which are still in excellent condition today.



## Crittenden County Historical Museum

**FREE Admission**

124 E. Bellville St. • Marion, KY

270.965.9257 • [www.CrittendenHistoryMuseum.org](http://www.CrittendenHistoryMuseum.org)

**Open April-October: Tuesday-Saturday**

10 a.m. - 3:00 p.m.

or by appointment at 270.965.9257

## Ben E. Clement Mineral Museum

205 N. Walker St. • Marion, KY

270.965.4263

[www.ClementMineralMuseum.org](http://www.ClementMineralMuseum.org)

**Open Wednesday-Saturday**

10 a.m. - 3:00 p.m.

Group discounts and educational classes with tours available when prescheduled or by appointment at 270.965.4263



MAKE YOUR FIRST STOP IN MARION  
THE WELCOME CENTER LOCATED AT 213 SOUTH  
MAIN ST., MARION, KY 42064

270-965-5015



# Explore

the Clement Mineral Museum  
& the History of Marion Kentucky



city  
of  
marion



[www.MarionKentucky.org](http://www.MarionKentucky.org)

BEN E. CLEMENT

# mineral MUSEUM



Faceted Fluorite

The Clement Mineral Collection is composed of thousands of fluorite crystal specimens, ranging in weight from a fraction of an ounce to hundreds of pounds. Each specimen was a "rare accidental find" among regular ore bodies, and was brought from deep underground and preserved.

Also, preserved with the collection are old photographs, maps, letters, records, mining equipment and other items of historical and geological significance from Mr. Clement's personal files and his mining operation.

In addition to the magnificent fluorite samples, there are many other rare mineral specimens, fossils and exquisite mineral carvings.



Ben E. Clement  
Sept. 6, 1891 – Jan. 30 1980

It was Mr. Clement's dream, especially in the closing years of his life, for the collection to be on permanent display in Marion at a place accessible not just to scientists and university groups but also to the general public.

Mr. Clement graduated in 1915 from Vanderbilt University in Nashville, Tennessee, with a Bachelor of Science degree. His

interest in the fledgling fluorspar industry was centered in Crittenden County. He ran the Alpine, Holly Davenport, and National Fluorspar Companies from 1919 to 1950.



Fluorite Sphalerite Quartz on Limestone Matrix

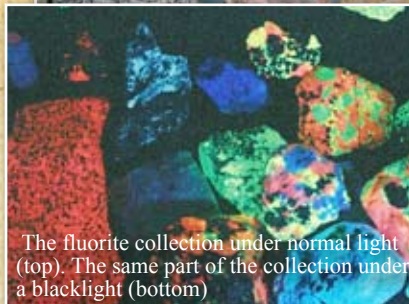
From 1920 until his death in 1980, Mr. Clement accumulated what has become known as the largest and finest collection of fluorite specimens in the world. Neatly blended into the collection are other minerals and fossil specimens from around the world.

## Annual Gem & Mineral Show First Weekend in June

### "Can You Dig It?"

Yes, you can in Marion, Kentucky. Come dig Fluorite and related minerals during the day and fluorescent minerals at night. For dig dates visit [www.clementmineralmuseum.org](http://www.clementmineralmuseum.org). Private digs available for groups of 10 or more.

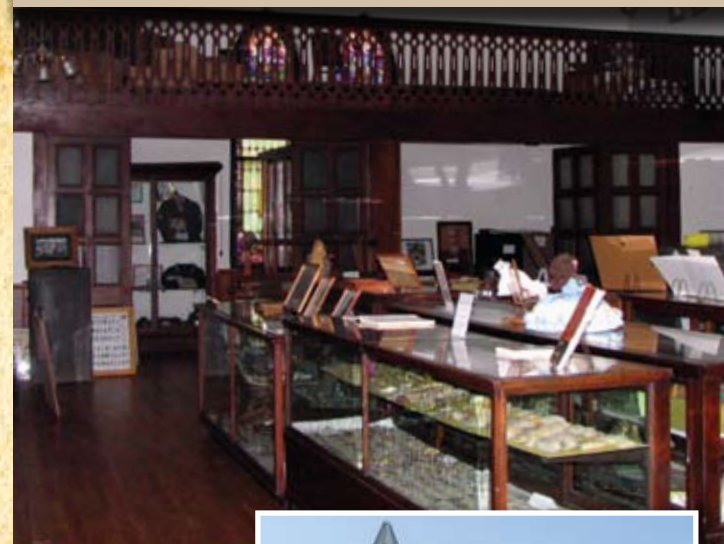
[WWW.CLEMENTMINERALMUSEUM.ORG](http://WWW.CLEMENTMINERALMUSEUM.ORG)



The fluorite collection under normal light (top). The same part of the collection under a blacklight (bottom)

CRITTENDEN COUNTY

# historical MUSEUM



The First Presbyterian Church established in what is now Crittenden County grew out of brush-arbor services that were held in 1803 at Dickey Springs, 3 miles east of Marion, by a Presbyterian Minister, Rev. William Dickey.



This Church building was built in 1881 on the corner of Bellville and College Street on land given by David Woods.

The church held services for over 120 years until the fall of 2002 when it was forced to closer its doors due to lack of membership. The West Kentucky Presbytery, the church's governing body, and the few remaining members, donated the church building to the Historical Society. They thought with the rich history of the church there could be no better use for the building than to be the home of the Crittenden County Historical Museum.